



High pressure nozzles	292, 285
Mosmatic cleaning head TRS	297
Mosmatic floor cleaner	297
Mosmatic rotor arms	297
Mosmatic surface cleaner with air recovery system and integrated gum remover	298
Mosmatic surface cleaner with recovery system for steam generator	299
Mosmatic wall cleaner	298
ST-550 foot valves	297
ST-97 floor cleaner	296
turbodevil - agriculture cleaner Big Wheel	294
turbodevil - our new turbodevil floor cleaner series	292-293
Wall & floor cleaner	296
Wall cleaner	295
weeddevil® - Our new device for weed control	300

turbodevil - our new turbodevil floor cleaner series

turbodevil – BASIC

- » Especially designed for professional cleaning applications
- » **Max. 60 °C. 1,000 r.p.m. at 3 - 60 °C**
- » Completely stainless design
- » Heat-resistant all around protection ensures a safe handling by protection against splashes and stones
- » The precision rotor arm is counterbalanced, precisely equilibrated and welded by robots
- » Low vibration and reliable running
- » Suitable for applications up to about 150 annual operation hours are guaranteed

Surface cleaner TD 300 BASIC

Surface cleaner TD 410 BASIC



Surface cleaner with a newly developed swivel with pivoting inlet for high revolutions per minute. The bending of the swivel is variably adjustable thus making an easy cleaning of floors and walls possible. 3 industrial castors (60 mm). 2 nozzles 1/4" M are required.

Max. 1,800 l/h / 60 °C. Max. 275 bar

R+M Nr.	Ø	ⓐ	R+M Nr.	Ø	ⓐ
521 030 300	300 mm	1/4" F	521 042 300	410 mm	1/4" F

Surface cleaner TD 410 BASIC



Swivel:
With triple bearing system

ST-2600
LTF

We recommend using the gun ST-2600 with patented LTF technology.

Surface cleaner with foldable handle bar for space saving and reasonable transport. Swivel with triple bearing system. 3 industrial castors (60 mm). 2 nozzles 1/4" M are required.

Max. 1,800 l/h / 60 °C. Max. 275 bar

R+M Nr.	Ø	ⓐ	ⓑ
521 042 350	410 mm	1/4" F	max. 275 bar

Symbols ⓐ inlet ⓑ pressure Ø diameter □ nozzle



turbodevil

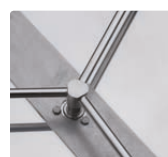
Newly developed:
Swivel for high revolutions with pivoting inlet



3 or 4 industrial castors (60 mm):
Easy and flexible steering



Precision rotor:
Welded by robots



Surface cleaner TD 520 BASIC



Swivel:
With triple bearing system

ST-2600
LTF

We recommend using the gun ST-2600 with patented LTF technology.

Surface cleaner with foldable handle bar for space saving and reasonable transport. Swivel with triple bearing system. 4 industrial castors (60 mm). 2 nozzles 1/4" M are required.

Max. 2,400 l/h / 60 °C

R+M Nr.	Ø	ⓐ	ⓑ	ⓓ	incl.
521 052 300	520 mm	1/4" F	max. 275 bar		–
521 052 301	520 mm	3/8" F	max. 275 bar		ST-2600
521 052 304	520 mm	3/8" F	max. 275 bar		ST-2600 swivel
521 052 302	520 mm	M22 F	max. 275 bar		–
521 052 303	520 mm	Plug KW	max. 275 bar		–

turbodevil - our new turbodevil floor cleaner series

turbodevil - agriculture cleaner Big Wheel



Surface cleaner with foldable handle bar Swivel with carbide sealings. Front-mounted castor (30 mm) ideal on slatted floors. 2 large big wheels. 2 nozzles 1/4" M are required. Max. 275 bar /1.800 l/h / 120 °C

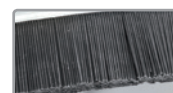
R+M Nr.	Ø	⊕	P
521 052 900	520 mm	1/4" IG	max. 275 bar



Large wheels:
For good grip



Clean solution:
Extra thick rubber bristles for splashback



turbodevil - INDUSTRIAL

Surface cleaner TD 410 INDUSTRIAL



Surface cleaner with a newly developed swivel with pivoting inlet for high revolutions per minute. The bending of the swivel is variably adjustable thus making an easy cleaning of floors and walls possible. 3 industrial castors (60 mm). 2 nozzles 1/4" M are required. Max. 1,800 l/h / 120 °C

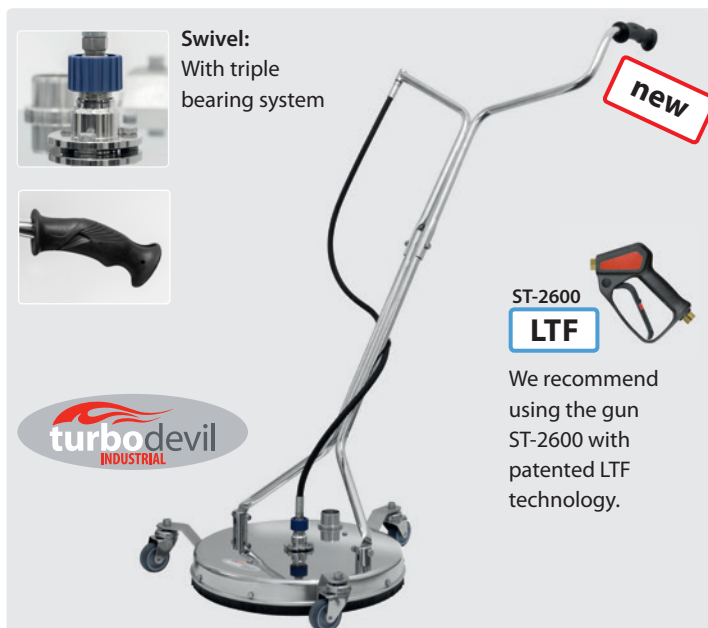
R+M Nr.	Ø	⊕	P
521 042 400	410 mm	1/4" F	max. 275 bar



turbodevil
INDUSTRIAL

- » Especially designed for industrial cleaning applications
- » **For hot water use of up to 120 °C. 2.000 r.p.m. at 5 - 120 °C**
- » Heat-resistant all around protection ensures a safe handling by protection against splashes and stones
- » The precision rotor arm is counterbalanced, precisely equilibrated and welded by robots
- » Low vibration and reliable running are guaranteed
- » Suitable for applications of up to 500 annual operation hours
- » Use of a especially high quality, **3-ball bearing swivel joint with ceramic sealing elements** for high durability and extremely long stress
- » **Castors are made out of stainless steel**

Surface cleaner TD 410 INDUSTRIAL with suction system



Surface cleaner with foldable handle bar for space saving and reasonable transport. **Very robust swivel with triple bearing system and tungsten carbide sealing elements.** 3 stainless steel industrial castors (60 mm). 2 nozzles 1/4" M are required.

R+M Nr.	Ø	⊕	P
521 042 500	410 mm	1/4" F	max. 275 bar

Precision rotor: Welded by robots



Suction system: The splash guard is specially designed for the best suction.



turbodevil - our new turbodevil floor cleaner series

Surface cleaner TD 410 INDUSTRIAL



Surface cleaner with foldable handle bar for space saving and reasonable transport. Swivel with triple bearing system. 3 industrial castors (60 mm). 2 nozzles 1/4" M are required.
Max. 1,800 l/h / 120 °C

R+M Nr.	Ø	G	P
521 042 450	410 mm	1/4" F	max. 275 bar

Surface cleaner TD 520 INDUSTRIAL



Surface cleaner with foldable handle bar for space saving and reasonable transport. High performance swivel, stainless steel. 4 industrial castors (60 mm). 2 nozzles 1/4" M are required.
Max. 2,400 l/h / 120 °C

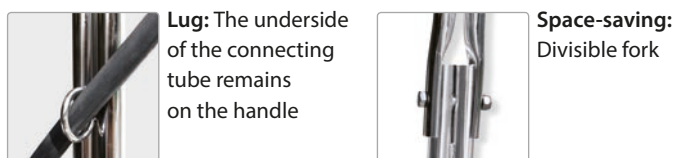
R+M Nr.	Ø	G	P
521 052 400	520 mm	1/4" F	max. 275 bar

Surface cleaner TD 750 INDUSTRIAL



Completely stainless steel. With reinforced hood and divisible fork. High performance swivel, stainless steel. Precision rotor arm welded by robots. 4 industrial castors (100 mm). 3 nozzles 1/4" M are required.
Max. 2,400 l/h / 120 °C

R+M Nr.	Ø	G	P	incl.
521 075 300	750 mm	1/4" F	max. 275 bar	-
521 075 301	750 mm	3/8" F	max. 275 bar	ST-2600
521 075 302	750 mm	M22 F	max. 275 bar	-
521 075 303	750 mm	Plug KW	max. 275 bar	-



Accessories for TD 300 & TD 410 & TD 410 INDUSTRIAL



Lance ST-007. 1/4" M : Plug KW.
Stainless steel 1,000 mm

R+M Nr.
512 495 90

High pressure nozzles

1/4" M NPT, 15 °



Impact = 100 %

D	R+M Nr.
02	613 05
025	613 07
03	613 10
04	613 30
045	613 40
05	613 50



Adapter. 1/4" M : M18 F.
Stainless steel

R+M Nr.
519 70



Lance extension. 1/4" M : M22 M.
Stainless steel 500 mm

R+M Nr.
513 129

Wall cleaner

WW 301

turbodevil



new



with brush strips



with rubberlip

- » Rotating wall cleaner suitable for telescopic lances
- » Splash guard stainless steel with rubberlip or brush strips
- » Splash guard \varnothing 300 mm
- » Without nozzles. 2 nozzles 1/4" M with 15° spray angle are required
- » Max. 250 bar / 90 °C

R+M Nr.	G	TYP	W
521 032 251	M22 M	rubberlip	1.9 kg
521 032 254	M22 M	brush strips	1.9 kg
521 032 256	M18 F	K rubberlip	1.9 kg
521 032 255	M18 F	K brush strips	1.9 kg
521 032 258	1/4" F	rubberlip	1.9 kg
521 032 257	1/4" F	brush strips	1.9 kg

WW 160

turbodevil



with brush strips



- » Rotating wall cleaner
- » Splash guard stainless steel with brush strips
- » Splash guard \varnothing 160 mm
- » Without nozzles. 2 nozzles 1/4" M with 15° spray angle are required
- » Max. 350 bar / 90 °C

R+M Nr.	G	W
710 100 160	M22 M	1.3 kg

High pressure nozzles

1/4" M BSP

Impact = 100 %



new

15°

D	R+M Nr.
02	613 052
025	613 072
03	613 102
04	613 302
045	613 402
05	613 502

Symbols \varnothing diameter W weight G inlet P pressure TYP type D nozzle

Wall & floor cleaner

Surfer wall & floor cleaner



- » Ideal for cleaning of plan walls and floors
- » Variable pressure regulation allows chemical suction
- » Wall & floor cleaner with two ergonomic hand grips for effortless wall cleaning
- » Reliable splash protection
- » Water inlet can be swivelled by up to 150°
- » Nozzles are included
- » Two lance extensions 400 mm are included
- » Inlet: Plug K hobby, Plug KW hobby, Plug F hobby und Plug Lavor hobby
- » Max. 160 bar / 8 l/min / 60 °C

SURFACE CLEANER wall & floor cleaner



- » Ideal for cleaning of plan walls and floors
- » Variable pressure regulation allows gentle cleaning of sensitive surfaces
- » Wall & floor cleaner with two ergonomic hand grips for effortless wall cleaning
- » Reliable splash protection
- » 4 wheels included in order to move the cleaner easily
- » Water inlet can be swivelled by up to 180°
- » Nozzles are included
- » One lance extension 400 mm is included
- » Inlet: M22 M
- » Max. 210 bar / 15 l/min / 60 °C
- » Nozzle size 045

R+M Nr.	⌀	Ⓢ
521 030 105	300 mm	1.4 kg

R+M Nr.	⌀	Ⓢ
521 100 345	350 mm	3.1 kg

ST-97 floor cleaner



Stainless steel. Variable pressure regulation. Low pressure phase for chemical suction. 4 nozzles 80° 015 included. Width 400 mm.
Max. 250 bar / 21 l/min / 80 °C

R+M Nr.	Ⓢ
200 097 500	1/4" M

Symbols ⌀ diameter Ⓢ weight ⓐ thread Ⓒ inlet Ⓓ outlet Ⓟ pressure

Mosmatic floor cleaner

Mosmatic surface cleaner FL-AHY 520



Completely stainless steel. Surface cleaner with an additional frame for highest stability. A height adjustable housing including a device for extraction. Foldable handle bar for space saving and reasonable transport. 2 nozzles are required. Suitable for 50 mm suction hose. 4 industrial castors (100 mm). Max. 2,400 l/h / 120 °C

R+M Nr.	Ø	G	P
108 809 71	520 mm	1/4" F	max. 500 bar

Mosmatic roof cleaner DR-520



precision rotor arm



adjustable height



hose connection

Completely stainless steel. Roof cleaner with an additional frame for highest stability. Adjustable in width of up to 90 mm and in height of up to 33 mm. Including a safety loop for the safety rope with clippers. The use of the ST-550 foot valve is recommended. 4 industrial castors (125 mm). Max. 2,400 l/h / 120 °C

R+M Nr.	Ø	G	P
108 809 72	520 mm	3/8" F	max. 350 bar
108 809 73	520 mm	3/8" F	max. 500 bar

Mosmatic cleaning head TRS

- » If water pressure is produced the rotor arms start turning by themselves. The arm rotates by means of the repulsive force of the water jet and does not need any additional drive.
- » Completely made out of stainless steel, with swivel DYT.
- » Nozzles are excluded. 4 EG nozzle tips are required.



Inlet 3/8" F. Max. 170 bar / 120 °C

The accident prevention regulations of the Employer's Liability Insurance Association regarding "the use of high pressure cleaner" (BGV D15) & "tasks with liquid jets" (BGV D26) in addition to DIN EN 60335-2-79 and DIN EN 1829-1 prescribe that manually guided spray units (like roof cleaners) shall be provided with a manually-actuated control for release of the cleaning solution.

ST-550 foot valves



Housing stainless steel. Valve stainless steel. Rubber feet. Max. 500 bar / 80 l/min / 150 °C

R+M Nr.	Ø	G
200 550 600	1/4" F	1/4" F
200 550 620	M22 F	M22 M

Mosmatic rotor arms

- » Completely made out of stainless steel. Light, rugged and welded by robots. Available as part or surface cleaner.
- » Further versions are available on request.
- » Inlet 3/8" F. Outlet: 1/4" F
- » Max. 250 bar / 120 °C



R+M Nr.	Ø
108 827 05	100 mm
108 827 07	200 mm
108 827 09	300 mm
108 827 11	400 mm
108 827 13	500 mm
108 827 15	600 mm

Mosmatic surface cleaner with air recovery system and integrated gum remover



- » Such as the other devices of the FL-AH series the new FL-AH-KAU is a record performance regarding quality, finish and excellent cleaning result. We do not know anybody who has not yet seen places such as railway stations, stadiums, schools and many more which are covered with hundreds of chewing gums. This development is the best solution against this appearance!
- » In order to ensure an effective removal of the gums the special nozzle is positioned behind the stainless steel cap. The surface is cleaned in a conventional way by means of the gun which is mounted at the right side. In case of removing stubborn dirt e.g. chewing gums the special nozzle is switched on by the gun mounted at the left side. The gums are cut up and totally removed by the hp jets and finally sucked in.
- » By means of four 100 mm plastic rolls the surface cleaner can be easily moved.
- » The frame as well as all mounting parts made out of stainless steel offer additional stability. Best cleaning results are achieved due to the height adjustable housing.
- » The swivel has reinforced self-lubricating stainless steel ball bearings and a dual spring based carbide seal system especially designed for higher revs. This combination guarantees a very long durability.
- » 2 spray guns ST-2605 equipped with the patented LTF technology, 2 hp nozzles 15° 03 and a special nozzle for the removal of chewing gums are included. Further nozzle sizes are available on request.
- » Suitable for 50 mm suction hose. Suction hose is excluded.
- » Max. 350 bar / 120 °C. Min. 15 l/min / 250 bar

R+M Nr.	Ø	Ⓒ	Ⓢ
108 809 61	520 mm	3/8" F	20 kg

LTF - Low Trigger Force 90 % reduced holding force and 40 % reduced trigger force against usual market guns.

Mosmatic wall cleaner

FL-ABB 200



Stainless steel. 2 flat stream nozzles 15° 1/8" M are required.
Min. 18 l/min / 150 bar.
Max. 350 bar / 120 °C

- » Wall cleaner - graffiti removing by means of suction system
- » Field of application: graffiti removing, restoration of different surfaces, maintenance of buildings and exclusively designed for applications with high water pressure
- » Suitable for applications from the outside e.g. concrete, brick, lime stone buildings or wooden surfaces
- » Suitable for 50 mm suction hose
- » Our spray gun ST-2605 (202 605 500) equipped with the patented LTF system is recommended for effortless cleaning applications
- » The high pressure gun and nozzles are excluded

R+M Nr.	Ø	Ⓒ	Ⓢ
108 780 35	200 mm	1/4" F	2.7 kg

FL-EB 200



Stainless steel. 2 flat stream nozzles 15° 1/8" M are required.
Max. 275 bar / 120 °C

- » Wall cleaner - economy
- » This multifunction floor cleaner is especially designed for all applications such as brick-lined walls, boat walls, bases, stairs, sidewalks, windows etc.
- » Our spray gun ST-2605 (202 605 500) equipped with the patented LTF system is recommended for effortless cleaning applications
- » The high pressure gun and nozzles are excluded

R+M Nr.	Ø	Ⓒ	Ⓢ
108 780 02	200 mm	1/4" F	2.7 kg

Symbols Ø diameter Ⓒ inlet Ⓢ weight

Mosmatic surface cleaner with recovery system for steam generator

The surface cleaner FL-DAR is the newest innovation from Mosmatic. It is possible to clean walls and other surfaces with steam and keep them dry. Save time! Steam cleaning is a great way to disinfect, sterilize or degrease surfaces. By using this cleaner you are able to clean 4-5 times quicker than by using a lance. The FL-DAR can be used with steam up to 180 °C and a ø

200 mm hand held model or a ø 300 mm floor model with wand are available. Both cleaner are equipped with nozzles. The complete stainless steel construction makes them perfect for the medical and food industry. Best performance with 10 kW steam generator. Delivery: 2 - 3 weeks

FL-DAR 200



PA castors
The castors allow free movement in any direction while having the same distance from the nozzles to the surface. The castors are made out of PA thus being suitable for the food industry.



Splash protection
The plastic rim guard prevents over spray and flying debris. It is extremely effective due to the wavy design.

R+M Nr.	Ø	⌀	⊞
108 780 91	200 mm	M22 x 1.5	2.5 kg

FL-DAR 300



High quality swivel:
The heart of a Mosmatic surface cleaner is the swivel which is reinforced with self-lubricating, stainless steel ball bearings and a high temperature sealing system.



R+M Nr.	Ø	⌀	⊞
108 781 91	300 mm	M22 x 1.5	4.0 kg

weeddevil® – Our new device for weed control

- » Ideal for professional service provider in the garden-, municipal and building cleaning industry
- » Completely made out of stainless steel
- » For hot water use of up to 120 °C, 0 - 350 bar
- » Suitable for low and high pressure applications
- » A working width of 400 mm
- » 1/4" nozzles have the ideal spraying angle of 65°

» swivelling application on sloping and vertical areas is possible

**Completely
chemical-free!**



weeddevil®



ST-2605

LTF

Our spray gun ST-2605 with the patented LTF technology is recommended for effortless working.



4 nozzles 1/4" M NPT are required

At the underside: concentrated and well-directed hot water without any temperature loss by an optimally designed housing having a perfect cleaning distance.



Useable at the left or right: the handle at the side optimises the handling and protects within hot water applications.

4 nozzles 1/4" M are required. 2 robustly industrial castors (260 mm). Max. 120 °C

R+M Nr.	M	castors	working-	G	⊖	P	°C	⊞	I / ⊞
200 097 700	stainl. steel	260 mm	400 mm	1/4" F	4 x 1/4" F	max. 350 bar	120 °C	7.4 kg	1,250 / 530 mm

Accessories thermometer

Easy mounting with counter plate and screws (incl.), or with back spring

R+M Nr.
200 097 420

Accessories flow restrictor

Flow restrictor for water reduction. Incl. adapter and nozzles (1,0, 1,1, 1,2, 1,3, 1,4)

R+M Nr.	G	⊖
200 097 750	1/4" M	1/4" M / M22 F

Symbols M material ⊞ diameter G inlet ⊖ outlet ⊞ width I height °C temperature ⊞ weight